

# CERTIFICATE OF LOCATION OF GOVERNMENT CORNER

CENTER \_\_\_\_\_ Corner of Section 5, Township 105, Range 42, 5TH P.M.

STATE OF MINNESOTA, County of MURRAY

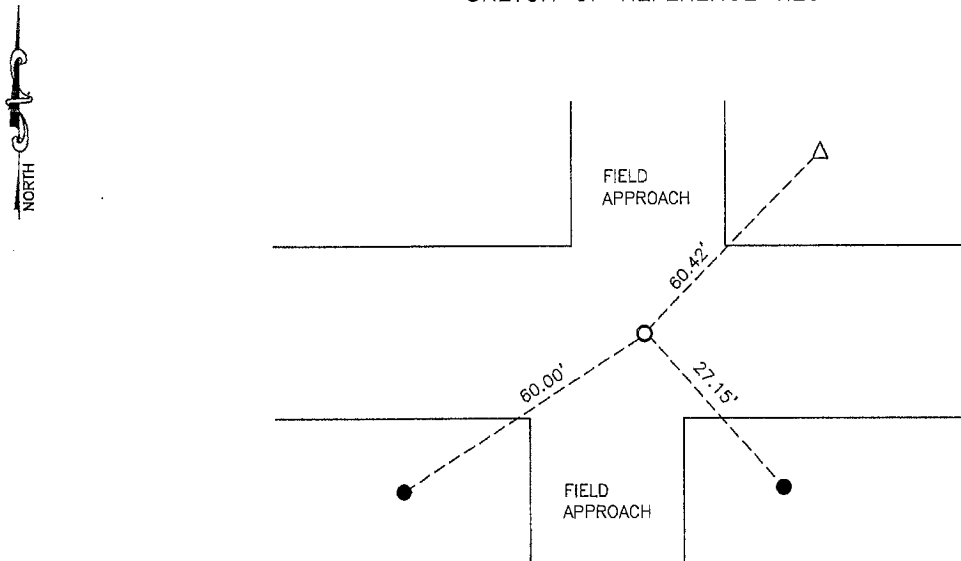
At the corner location shown on the sketch:

On 9/20/13 found a PK NAIL

left monument as found,  lowered monument,  removed monument (explain)

On \_\_\_\_\_ placed a \_\_\_\_\_

### SKETCH OF REFERENCE TIES



Minnesota State Plane Coordinate  
System Murray County Datum  
NAD83 (1996)  
N: 129307.094  
E: 461204.404

STEEL PIN IN SLOPE SE 27.15'  
STEEL PIN IN SLOPE SW 60.00'  
N&C TEL.PED. NE 60.42'

Statement of evidence relative to this corner location is on back of page.

I hereby certify that this document and the data contained herein was prepared by me or under my direct supervision.

*Samuel B. Smith*  
SIGNATURE

9/30/13  
DATE

Registration No. 43844

Land Surveyor,  Professional Engineer  
 County Surveyor,  County Engineer

OFFICE OF THE COUNTY RECORDER

County of \_\_\_\_\_

I hereby certify that this document was filed in the Co. Recorders office at \_\_\_\_\_ .M on the \_\_\_\_\_ day of FEB 5 2014 A.D. 20\_\_\_\_

County Recorder *James V. Johnson*  
By \_\_\_\_\_, Deputy

DOCUMENT NO. \_\_\_\_\_

## Statement of Evidence

1861, N.W. Wellman & S.S. Smoot did the original subdivision of the township.

1956, Concrete stone was found, Concrete monument was set 3 inches below grade.

October 5, 1976, Concrete monument was found 3 inches below grade.

September 20, 2013, Bueltel-Moseng Land Surveying found PK Nail in center of the road. Fit all existing ties from 1976.